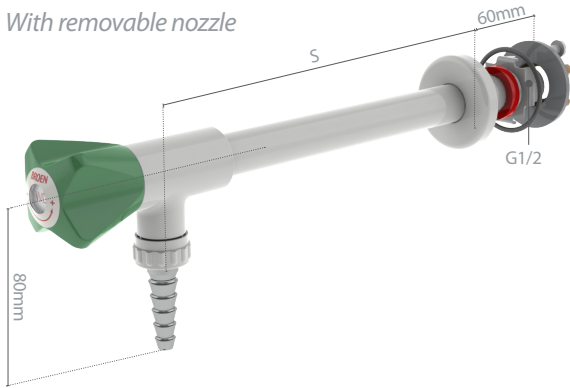
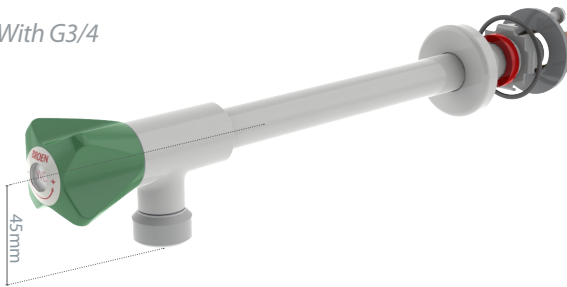


With removable nozzle



With G3/4



SPECIFICATIONS

Handle: Metal, BROEN-LAB POLYCOAT powder coated with media indication according to EN13792

Hose nozzle: Removable/external G3/4 thread, metal

Headwork: Diaphragm type

Opening/closing function: 1 1/2 x 360°

Temperature range: 0-90°C

Max. working pressure: 10 bar / 147 psi

Test pressure: 1 x working pressure

Weight: 0.9 kg

MATERIALS WITH MEDIA CONTACT

Metals: Stainless Steel, AISI 316



Diaphragm: PTFE

Rubber: EPDM



ORDERING INFORMATION

For standard configuration please refer to the item numbers below.

Model: With removable nozzle 

Media	S = 150mm	S = 200mm
 Distilled water	2533 001 1003	2533 002 1003
 Deionized water, cold	2533 001 1036	2533 002 1036

Model: With G3/4 

Media	S = 150mm	S = 200mm
 Distilled water	2533 032 1003	2533 047 1003
 Deionized water, cold	2533 032 1036	2533 047 1036